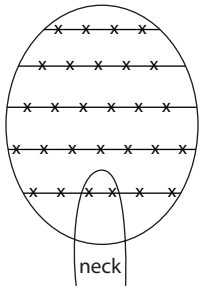


2. Pin the neck in place. Use a strong quilting thread and attach the head securely with a ladder stitch or invisible stitch.

ATTACHING THE HAIR

1. Use a disappearing fabric marker or straight pins to mark a circle around the head as a placement line to follow when attaching the hair. Attach the hair along this guideline and fill in the center. Notice that the hairline does not follow the seam of the neck. The top of the neck will actually be hidden by the hair.



Attach hair.

2. Thread the needle (I use a curved one) with a manageable length of thread and secure the knot inside the hairline, where it will be hidden. Choose a thread color that will blend unnoticed into the hair.

3. Overlap the rows of hair like shingles. The spaces between the rows of hair are hidden by the next row of hair. Space the bundles of hair $\frac{1}{2}$ " apart. Space the rows of hair $\frac{3}{4}$ " apart. Start attaching the hair at the neckline. Cut yarn in 5" lengths for the first 3 rows and then in 3" lengths for the top of the head. Pick up 2 strands (for a thick yarn) or 3 strands (for a thin yarn) in the center and sew to the head. If you pick up 2 strands and sew them to the head at the center of the strand, you now have 4 strands.

4. When all the hair is attached, hold the doll upside down and fluff the hair. Give her a haircut by first evening out the longest layer of hair and then snipping off any strands that seem too long.

5. Finish the doll by adding a hat or giving her a hair bow.

Emily Ann's Companion Doll

TEMPLATES REQUIRED

Find the template patterns beginning on page 106. Make templates following the instructions on page 13.

Use all the templates with an "Emily Ann's Companion Doll" label.

EMILY ANN'S COMPANION DOLL'S BODY

1. Lay out the companion doll body templates on 2 layers of body fabric, right sides together. Use a mechanical pencil to neatly trace around each template.

2. Sew around the body on the sewing line, leaving an opening at the bottom as shown on the template pattern. Cut the body out with a $\frac{1}{8}$ " seam allowance. Turn right side out. Beginning at the hands, stuff the arms partway and then stitch across each arm. Put a small amount of stuffing in the upper arm and stitch across where the arm meets the body. Stuff the rest of the body.



Small doll body

3. Fold the 10" × 5½" piece of striped fabric right sides together. Trace the leg template twice on the wrong side of the striped fabric.

4. Carefully line up the stripes and pin as you did with the large doll. Sew around the legs, leaving them open at the top for turning and stuffing.

5. Cut out with a ¼" seam allowance. Turn right side out.

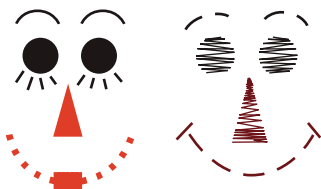
6. Stuff the legs partway and then stitch across each leg. Put a small amount of stuffing in the top of the leg and stitch the leg closed.

7. Fold under the raw edge of the body opening, insert the legs, and pin in place. Sew across the bottom edge of the body, securing the legs.

Face

1. If you would like to add some blush to the cheeks (page 26), do it before you embroider the details.

2. Choose ¼" snaps or buttons for the eyes. Anchor the knots at the back of the head to be hidden later by the hair. Sew the buttons on the face for eyes. Embroider the face details with embroidery floss or sewing thread. Use red or pink thread to embroider the triangle nose and give the doll a smile. Use black or brown thread for the eyelashes and eyebrows. Remember that this is Emily Ann's play doll, so the less perfect your stitches are, the better she'll look.



Traditional

Primitive

Embroider face.

NOTE

There are several variations in the gallery companion dolls. Two of the companion dolls have fabric triangles that are haphazardly sewn onto the face instead of the embroidered nose. You could also use a button for the nose, cut out a detail from the dress fabric, or not give the doll a nose at all. A tiny embroidered heart or French knots could be used for the mouth.



Hair

You can use the same yarn for the hair as you used for the large doll or 2 skeins of embroidery floss in a color to match the large doll. If you choose yarn, sew it to the head 1 strand at a time. If you use embroidery floss, sew it to the head 3 strands at a time.

1. Cut the yarn or floss in 2" lengths.

2. Sew the pieces to the head in the center of the strands, using a coordinating thread. Start at the neckline and sew 4 rows of hair across the back of the head, stopping at the side seams of the head. Give the doll a haircut and a hair bow tied from ¼"-wide ribbon.



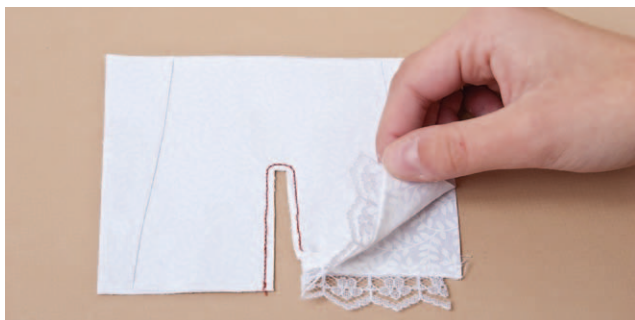
DRESSING THE COMPANION DOLL

These clothes are tiny, but using the trace, sew, and cut technique will make quick work of dressing this doll.

Pantaloons

1. Pin 2 squares 5" × 5" of pantaloon fabric with right sides together. Trace the companion doll pantaloon template with a pencil. Cut across the top of the fabric on the waistline and across the bottom edge of the fabric on the pantaloon legs.

2. Sew around the inside of the legs and crotch in a single seam. Open the legs and sew a 4" piece of ½"-wide trim to the bottom edge of each leg and then press.



Sew seam and attach trim.

3. Sew the side seams and cut out with a ¼" seam allowance. Turn the pantaloons right side out.

4. Fold under ¼" at the raw edge at the waist. Use floss or quilting thread to make a running stitch around the waist, beginning and ending at the center front. Put the pantaloons on the doll. Pull the floss at the waist to gather and tie in a knot.



Make pantaloons.

Dress

1. Fold the dress fabric with right sides together. Pin the fabric together and trace the dress template on the wrong side of the fabric with the top edge of the sleeves on the fold. Cut the neck hole, sleeve edge, and bottom edge of the dress on the traced lines. Cut an opening at the center on the back of the dress as shown on the template pattern. Just as you did with the pantaloons, add the sleeve trim before sewing the sleeves and side seams.



2. Open up the dress and sew a 4" piece of ½"-wide trim around the right side of each sleeve on the pencil line and press under.



Prepare dress piece.

3. With right sides together, pin the dress together, matching the sleeves, the neck, and the dress bottom edge. Sew the underside of the sleeve and the dress side in a single seam. Cut out the sides of the dress with a ¼" seam allowance. Sew a ¼" hem at the bottom of the dress. Turn the dress right side out. Sew a 4" piece of ½"-wide trim around the neckline. Add a tiny heart button to the center front of the dress at the neckline. Put the dress on the doll and use a ladder stitch to close the back of the dress.



Construct dress.

Apron

1. Cut a 3" × 6" rectangle from the ruffle fabric for the apron and a 1½" × 20" strip for the tie. Hem the apron on both 3" sides and 1 of the 6" sides. An option would be to use ribbon in place of the tie.
2. Sew a gathering stitch on the 6" side that is not hemmed. Pull the gathering stitch so the apron measures 3" wide. With right sides together, pin the tie to the apron on the gathered edge, matching up the centers. Attach the tie with a ¼" seam allowance across the top of the apron. Fold the raw edges of the tie under and press. Sew a seam down the length of the tie.



Apron construction

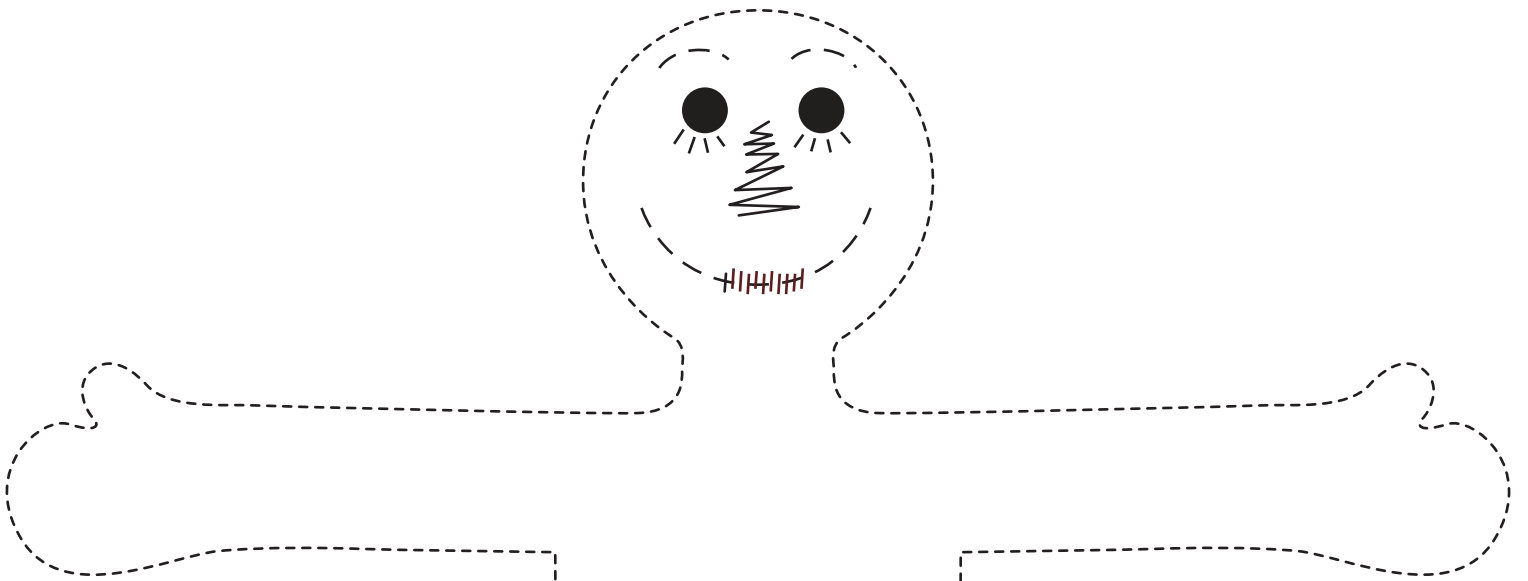
3. Put the apron on the doll and tie at the back. The only thing left is to decide where you'll display her.



Front of small doll



Back of small doll

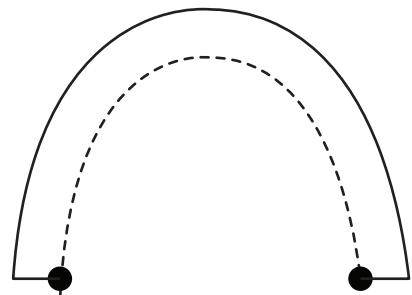


Emily Ann's
Companion Doll

Trace 1 on
doubled fabric.

Stretch

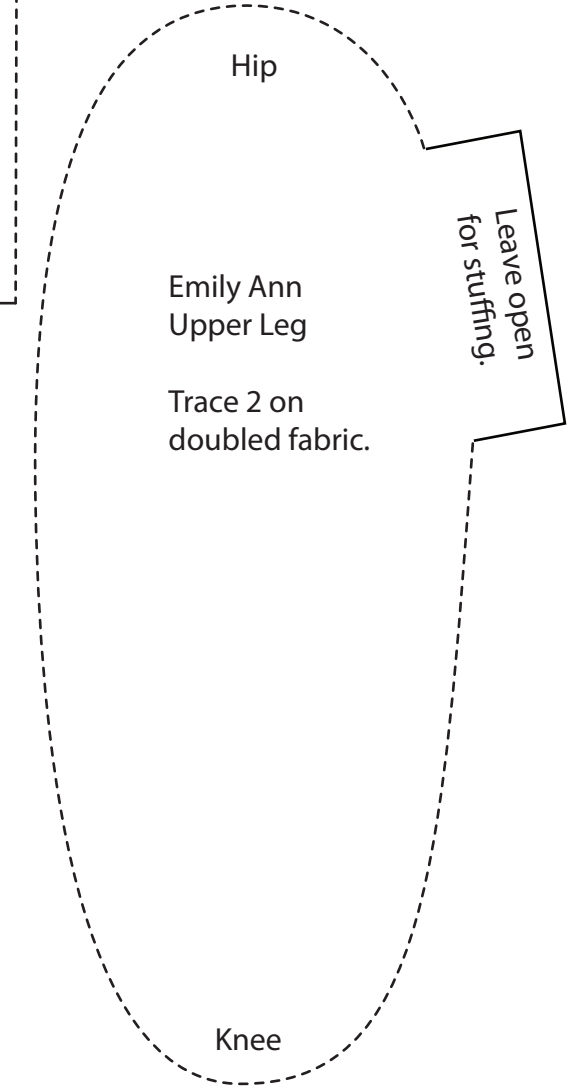
Leave open for stuffing.



Emily Ann
Lower Arm

Trace 2 on
doubled fabric.

Leave open
for stuffing.



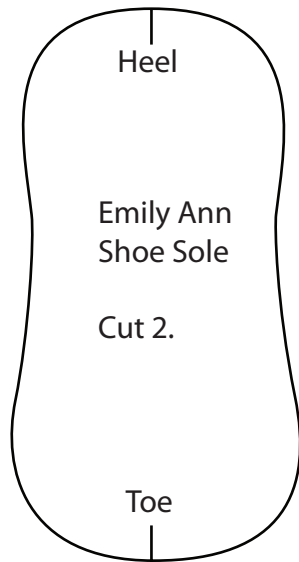
Hip

Emily Ann
Upper Leg

Trace 2 on
doubled fabric.

Leave open
for stuffing.

Knee



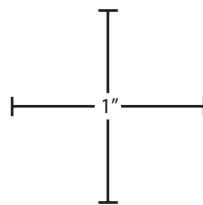
Heel

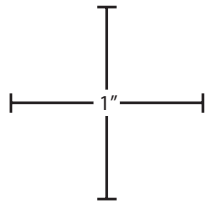
Emily Ann
Shoe Sole

Cut 2.

Toe

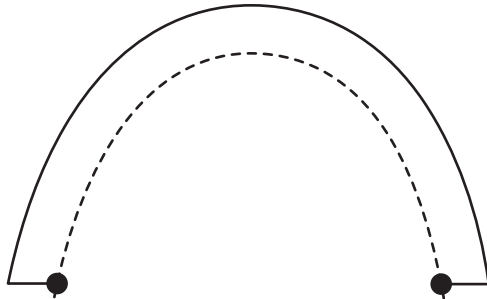
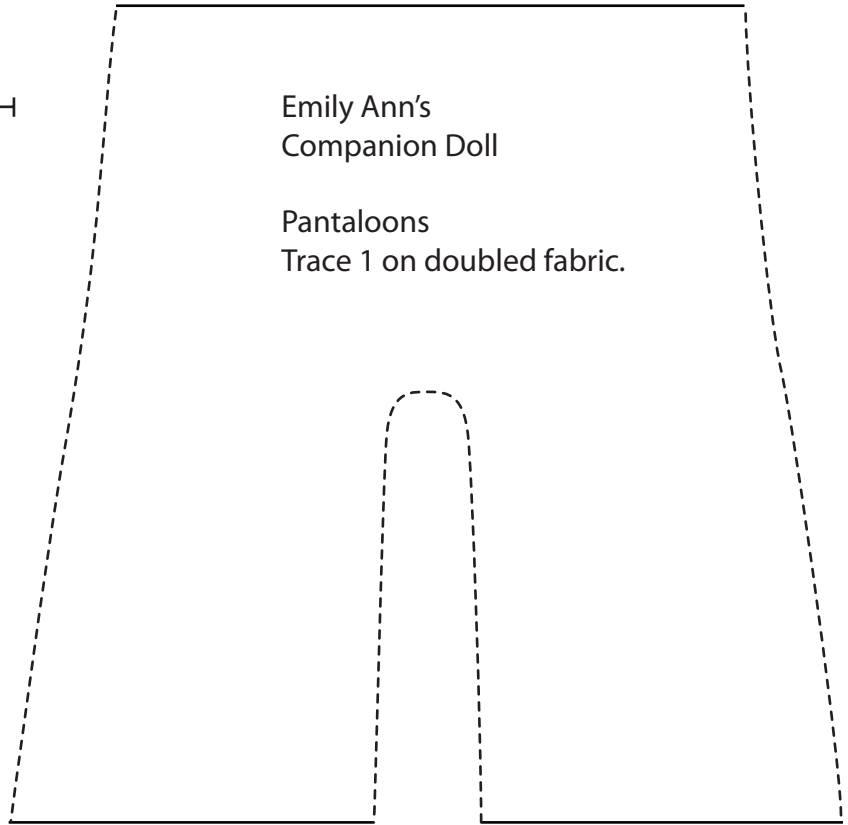
Stretch





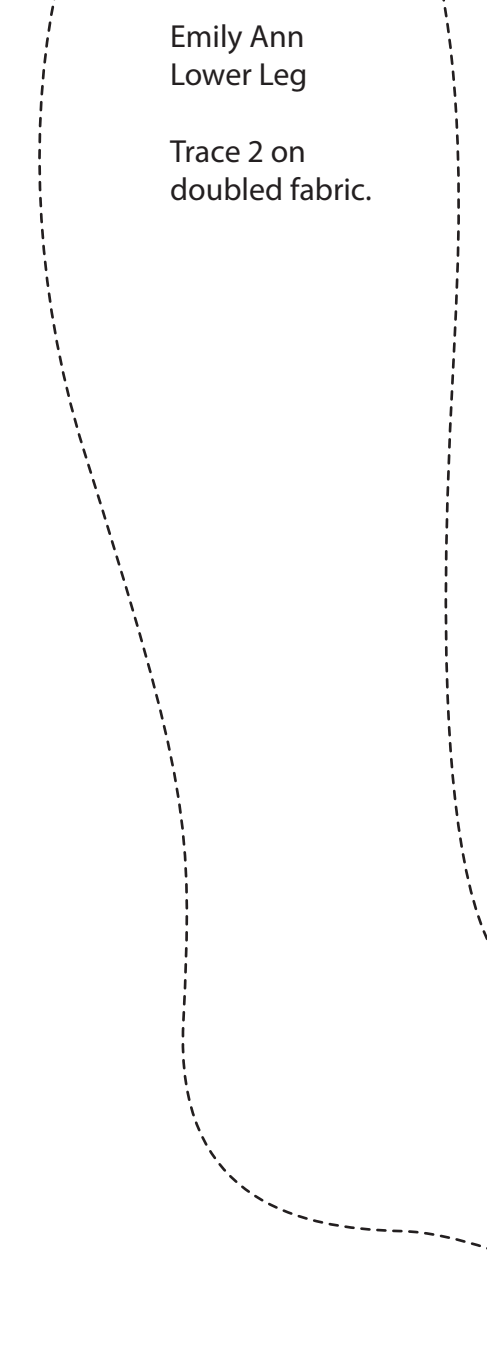
Emily Ann's
Companion Doll

Pantaloons
Trace 1 on doubled fabric.



Emily Ann
Lower Leg

Trace 2 on
doubled fabric.



Emily Ann
Arm Tab

Cut 2.

Leave open
for stuffing.

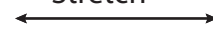
Shoulder

Emily Ann
Upper Arm

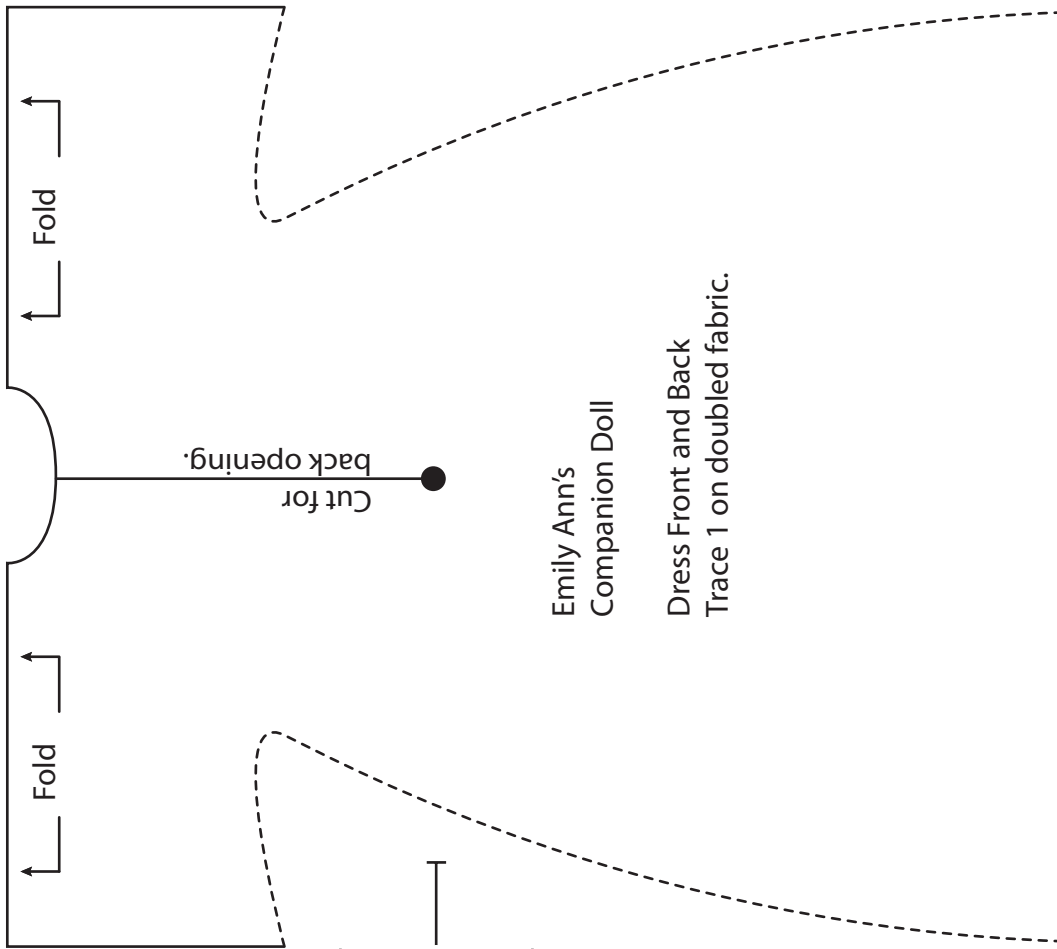
Trace 2 on
doubled fabric.

Leave open
for stuffing.

Stretch

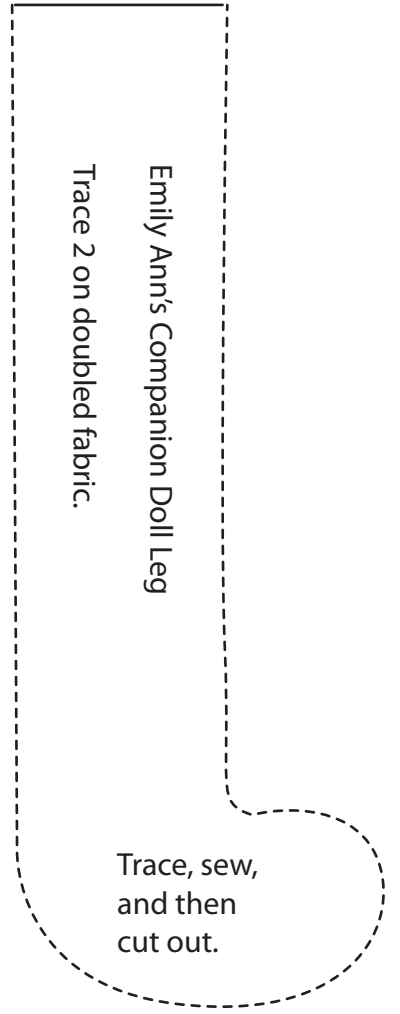


Elbow



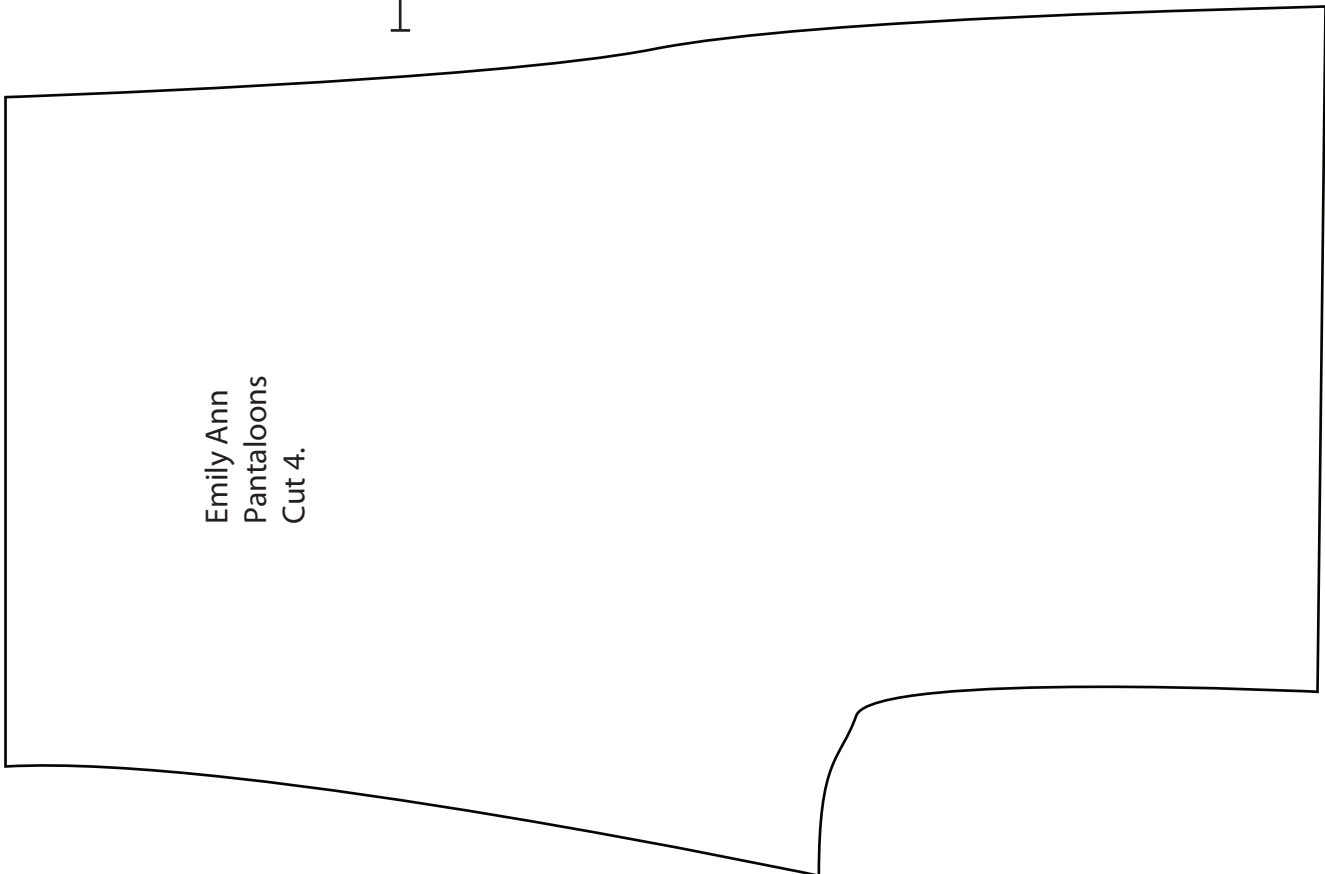
Emily Ann's
Companion Doll

Dress Front and Back
Trace 1 on doubled fabric.



Emily Ann's Companion Doll Leg
Trace 2 on doubled fabric.

Trace, sew,
and then
cut out.



Emily Ann
Pantaloons
Cut 4.