

bloomin' hearts quilt

finished size: 53" × 64" and have fun making this bright, cheerful quilt!



Bloomin' Hearts quilt

material requirements

- ½ yard each of red, orange, aqua, royal blue, purple, violet, yellow, and medium blue dotted print for backgrounds, strips, and heart appliqué pieces
- 1¾ yards of lime green dotted print for stem/leaf appliqué pieces and borders
- 3⅞ yards for backing
- ⅝ yard for binding or 7 yards of ready-made binding
- 2½ yards of fusible web

BATTING: 58" × 68"

NOTIONS:

- Cotton thread for piecing
- Rayon thread to match appliqué fabrics
- Lime green thread for quilting

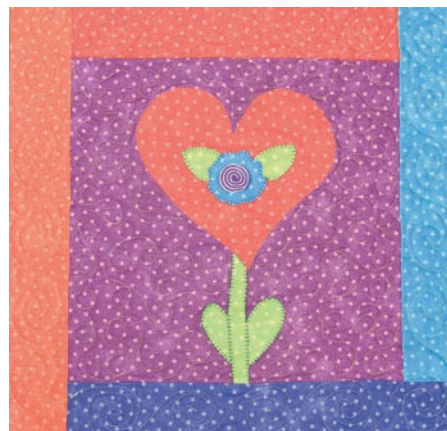
BUTTONS: 4 medium purple/white swirls, 3 medium green/white swirls, 2 medium red/white swirls, 1 medium orange/white swirl, thirty ½" marigold triangle buttons (see Resource Guide for available button packs)



Buttons for *Bloomin' Hearts* quilt

general instructions

The quilt consists of 20 blocks with a finished size of 11" × 11". All appliqué and embellishment is completed before piecing the quilt top. There are 2 blocks that alternate throughout the quilt.



Single-heart block



Triple-heart block

Cutting

CUT BACKGROUNDS FOR THE ENTIRE QUILT:

COLOR	11½" SQUARES	8½" SQUARES	2" STRIPS*
Red	1	2	2
Orange	2	1	2
Aqua	2	1	2
Royal Blue	1	1	2
Purple	1	2	2
Violet	1	1	2
Medium Blue		1	1
Yellow	2	1	1

* The length is cut as the strips are sewn to the 8½" background block.

Lime green – Cut 4 pieces 5" × 58" for borders (actual border length will be determined and adjusted after piecing the quilt top).

Backing – Cut 2 rectangles 58" × 41".

Binding – Cut 7 strips 2½" × the width of the fabric.

Appliqué

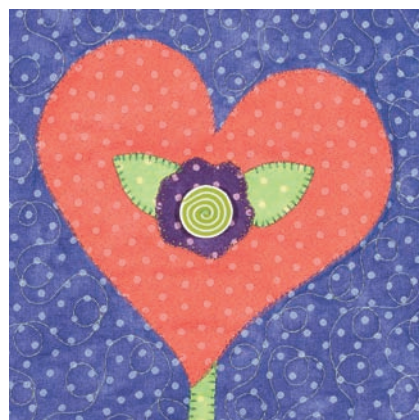
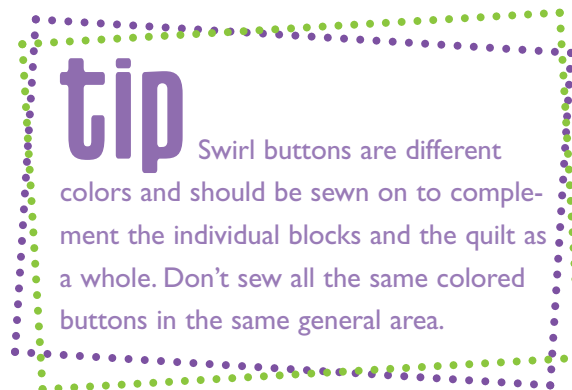
1. Fuse and cut the appliqué pieces according to the *Bloomin' Hearts* appliqué patterns on page 65. Refer to the general appliqué instructions on page 8. Refer to the Quilt Assembly Diagram on page 58 and the quilt photo on page 55 for fabric selection and block placement.

2. Machine appliqué all raw edges using a zigzag or blanket stitch. Optional: Stitch straight down the stem to make the leaves appear as if they are a separate appliqué piece.

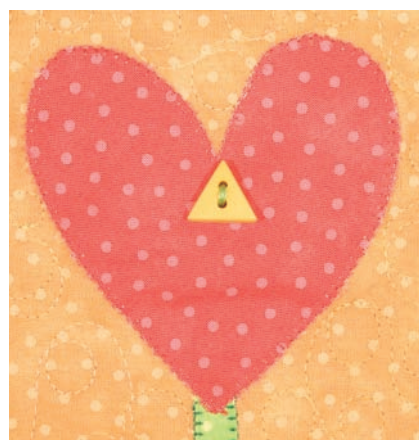


Stitch the stems so they look separate.

3. Sew triangle buttons to the hearts on the 11½" triple-heart blocks. Sew swirl buttons to the centers of the hearts on the 8½" single-heart blocks.



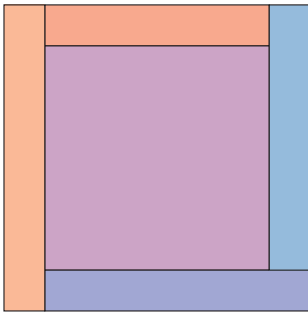
Sew swirl button on single-heart block.



Sew triangle buttons on triple-heart block.



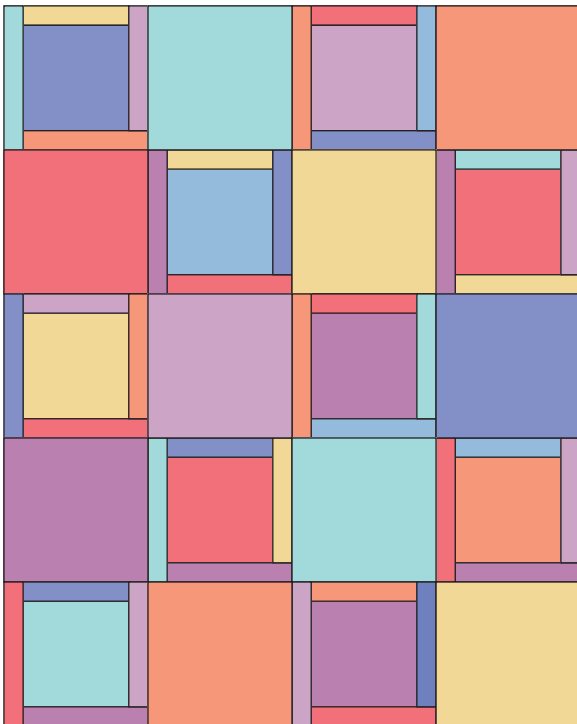
4. Refer to the Single-Heart Block Assembly Diagram and sew 2" strips to 8½" squares for each single-heart block using a Log Cabin piecing method. Sew a strip to the top of the square. Trim the excess and press the seam toward the strip. Continue sewing strips clockwise around the block until the block measures 11½".



Single-Heart Block Assembly Diagram

Piecing the Top

Referring to the *Bloomin' Hearts* Quilt Assembly Diagram, sew the blocks together to form 5 rows. Press the seams of each row in opposite directions. Sew the rows together, matching intersecting corners. Press the seams in the same direction.



Bloomin' Hearts Quilt Assembly Diagram

Borders

1. Measure the quilt top across the center from top to bottom. Cut 2 pieces this length for the side borders.
2. Sew the borders to the sides of the quilt and press the seams toward the borders.
3. Measure the quilt top across the center from side to side. Cut 2 pieces this length for the top and bottom borders.
4. Sew the borders to the top and bottom of the quilt. Press the seams toward the borders.

Finishing the Quilt

1. Piece the backing by joining the 58" edges of the rectangles. Press the seam open.
2. Trim the backing to a rectangle 58" × 68".
3. Layer and quilt, referring to the general quilt finishing instructions on page 10.

Binding

1. Make the binding or use ready-made binding.
2. Sew the binding to the quilt. Refer to the general quilt finishing instructions on page 10.
3. Add a quilt label and enjoy!